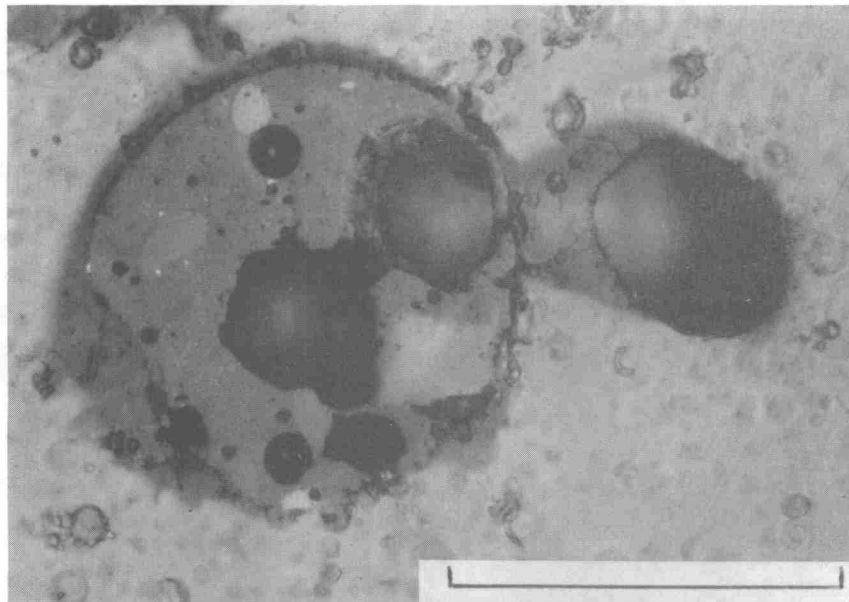


**Figure 27A.** Vesicular spherule of dark-brown, nearly opaque glass containing mineral fragments. Note the secondary bubble-like structure at upper right, probably formed by venting of gas from the adjacent vesicle in the spherule before complete solidification. Fragment 318,553; plane polarized light; scale bar 0.1 mm.



**Figure 27B.** Same view as Figure 27A; reflected light. The dark glass spherule contains elliptical, partly-digested mineral inclusions, apparently pyroxene (dark gray, left) and an opaque phase (lighter gray, top). Small Ni-Fe spherules in the glass appear as very small bright specks, especially at the left side of the spherule.

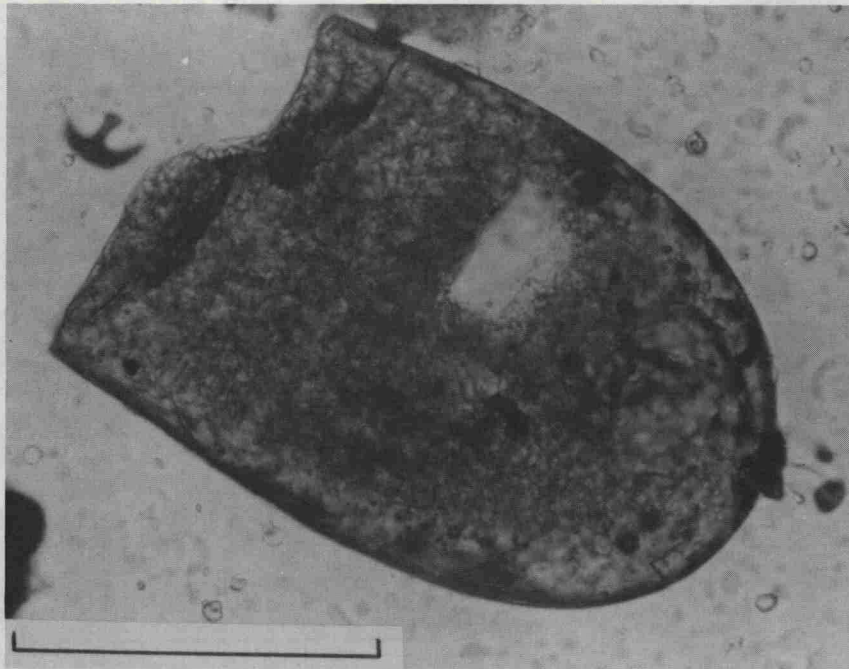


Figure 28A. Broken droplet of light brown glass with included feldspar(?) crystals. Color and texture of the fragment are similar to some light (feldspathic) microbreccias, suggesting formation of the droplet by shock-melting of feldspathic source rocks. Fragment 318,521; plane polarized light; scale bar 0.1 mm.

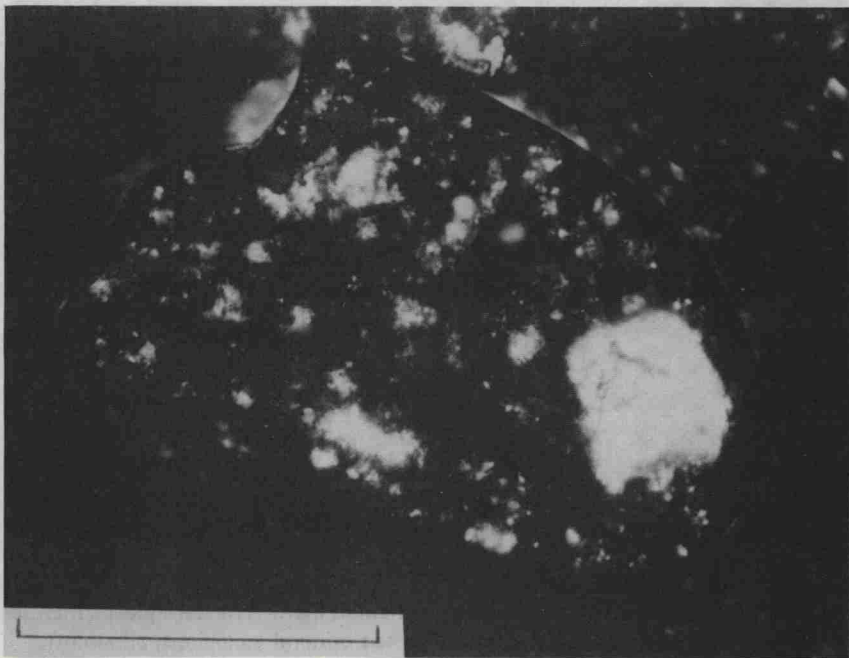


Figure 28B. Same view as Figure 28A; crossed polarizers. Note the numerous small feldspar(?) crystals enclosed in the glass.